

salvacion

Surveillance and Analysis of COVID-19 in Children Nationwide

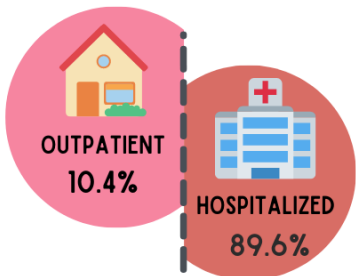
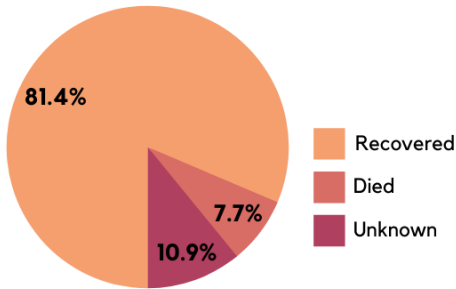
CASE BULLETIN #1 APRIL 30, 2021

Data collection is still ongoing. Submit your **CONFIRMED** and **PROBABLE** pediatric COVID-19 patients at salvacion.pidsphil.org

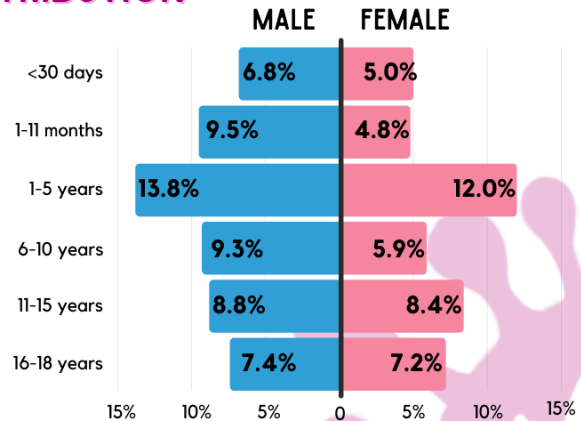
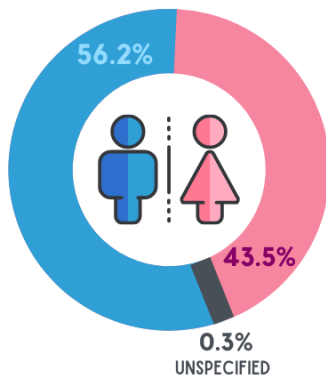
559

REPORTED CASES
 JULY 3, 2020 TO APRIL 3, 2021

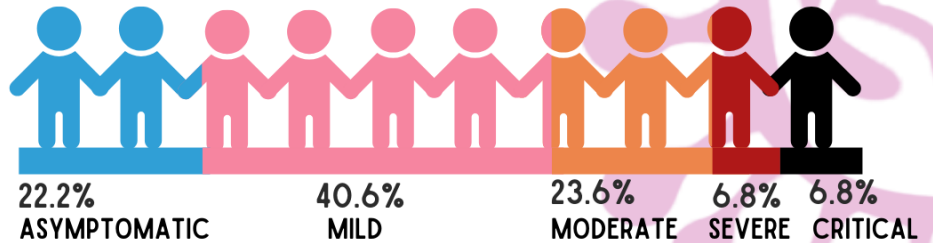
OUTCOME



AGE AND SEX DISTRIBUTION



DISEASE SEVERITY



COMORBIDITIES

- HEMATOLOGIC/ONCOLOGIC DISEASE 5.2%
- CARDIAC DISEASE 4.3%
- NEUROLOGIC/DEVELOPMENTAL DISEASE 3.8%
- KIDNEY DISEASE 3.2%
- PREMATURITY 2.2%

- ASTHMA 1.8%
- OBESITY 1.1%
- PREGNANCY 1.1%
- TB/LTBI 0.7%

CO-INFECTIONS

- 2.0% COVID-19 & DENGUE
- 2.0% COVID-19 & TUBERCULOSIS

For inquiries or suggestions, please email pidsp.covid19@gmail.com or contact 0961-609-9661 or 0956-150-9002. Thank you for your significant contributions to the SALVACION registry!



salvacion

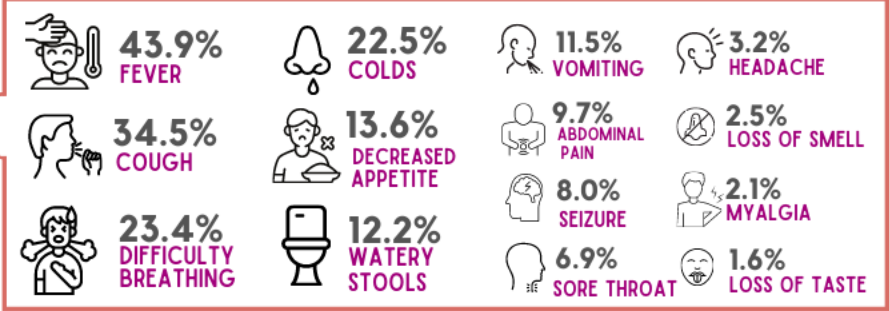
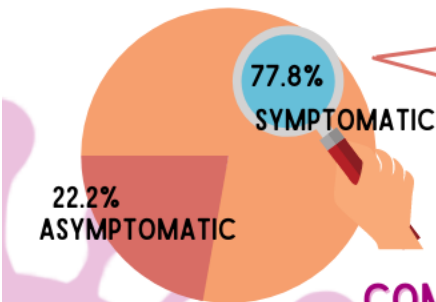
Surveillance and Analysis of COVID-19 in Children Nationwide

CASE BULLETIN #1 APRIL 30, 2021



Data collection is still ongoing. Submit your **CONFIRMED** and **PROBABLE** pediatric COVID-19 patients at salvacion.pidsphil.org

CLINICAL MANIFESTATIONS



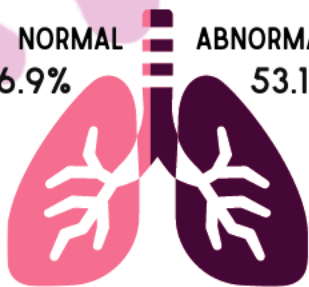
COMMON LABORATORY PARAMETERS

(MEDIAN)

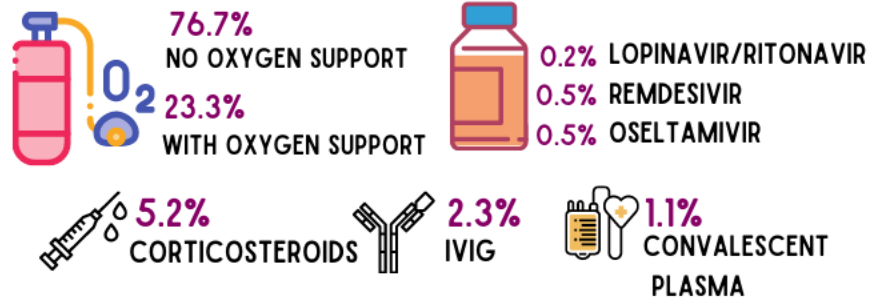
	WBC x10 ³ /uL	NEUTRO- PHILS	LYMPHO- CYTES	PLATELETS x10 ³ /uL	CRP mg/L	ESR mm/hr	PROCAL- CITONIN ng/L	D-DIMER mg/L	FERRITIN ng/L	LDH U/L
ASYMPTOMATIC	8.6	0.47	0.41	348	0.6	---	0.10	---	---	---
MILD	8.6	0.56	0.35	301	6	10	0.18	---	---	---
MODERATE	11.1	0.58	0.33	298	6	22	0.16	1.78	125	339
SEVERE	12.1	0.62	0.25	272	6	73	0.23	2.97	272	678
CRITICAL	11.1	0.60	0.29	259	12	38	5.18	5.77	395	908

CHEST X-RAY

NORMAL 46.9% ABNORMAL 53.1%



MANAGEMENT



For inquiries or suggestions, please email pidspp.covid19@gmail.com or contact 0961-609-9661 or 0956-150-9002. Thank you for your significant contributions to the SALVACION registry!