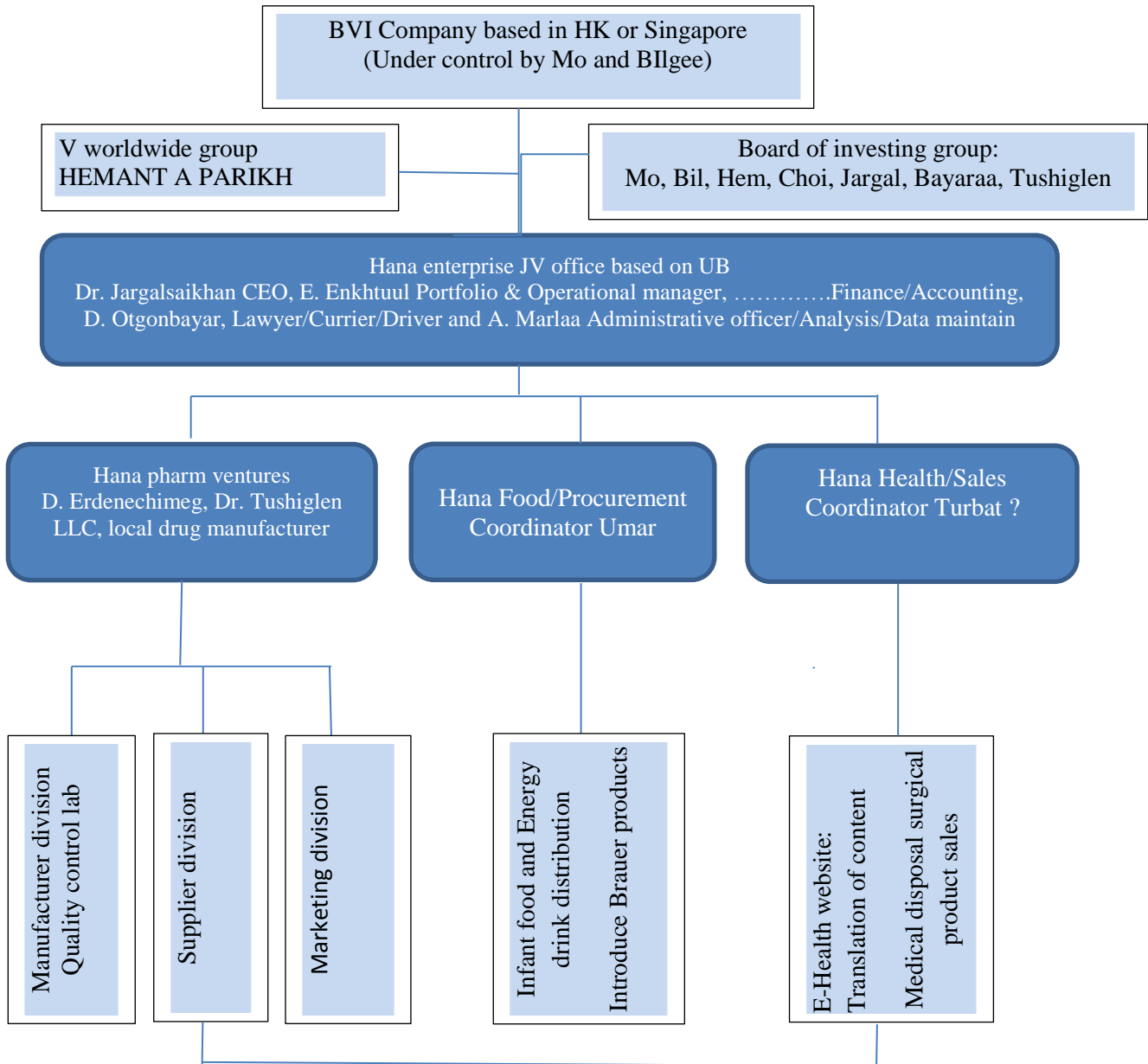


ORGANIZATIONAL CHART AND MONTHLY PROJECTION FOR 2 YEARS



INVESTMENT SUMMARY FOR INITIAL 2 YEARS

(Total amount is confirmed with Hemant A Parikh)

	Item	Amount (US\$)
(A)	Fixed cost: Investing assets & working capital	1589400
(B)	Variable cost: JV office management	384000
	Total	1973400

DETAILED BREAKDOWN OF FINANCIAL PROJECTION

Monthly projection, by 000'US\$

Year	Item	1 st	2 nd	3 rd	4 th	5 th	6 th	7 th	8 th	9 th	10 th	11 th	12 th	Sum
1 st	(A)	60	79,4	85	80	80	80	80	80	80	80	85	100	969.4
	(B)	47,75	13,75	15,75	15,75	13,75	13,75	13,75	13,75	13,75	13,75	13,75	13,75	203
	(A+B)	108	93,2	101	95,8	93,8	93,8	93,8	93,8	93,8	93,8	98,8	114	1172
2 nd	(A)	50	120	90	100	100	80	80	0	0	0	0	0	620
	(B)	13,75	13,75	13,75	15,75	15,75	13,75	13,75	27,75	13,75	13,75	13,75	13,75	181
	(A+B)	63,8	134	104	116	116	93,8	93,8	27,8	13,8	13,8	13,8	13,8	801.4
Total (24 months)		1973.4												

JV office projection's fixed and variable cost, by US\$

(A) FIXED COST		Rate US\$	Unit	Amount
1	IT support	40000	1	40000
2	BIO equivalence	20000	10	200000
3	Dossier non bio equivalence	5000	20	100000
4	Box design	100	30	3000
5	Set up design	80	30	2400
6	Literature	200	30	6000
7	Catalog	400	20	8000
8	WHO (6MP)	80000	1	80000
9	Design and packaging	100000	1	100000
10	Machinery tablets			200000
11	Machinery capsules			80000
12	Machinery packaging			120000
13	Quality assurance to quality control			90000
14	Construction maintenance			200000
15	Raw materials			200000
16	Trading materials			60000
17	Packing material			100000
	Total (A) Fixed cost			1589400
	Total (B) Variable cost			384000
	Total (A+B)			1973400
	No of Months (2 years*12 months)			24 months

(B) Variable cost		Per month	Months	1 st year	2 nd year
A	<i>Salary of JV office key staff</i>				
1	CEO	2500	12	30000	30000
2	Portfolio/Operational manager	1200	12	14400	14400
3	Finance / Accounting	1000	12	12000	12000
4	Hana food coordinator	1200	12	14400	14400
5	Hana health coordinator	1200	12	14400	14400
6	Lawyer/driver/currier	700	12	8400	8400
7	Admin/analysis/data maintain	500	12	6000	6000
	Subtotal	8300		99600	99600
B	<i>Office expenses</i>				
1	Communication	500	12	6000	6000
2	Vehicle petrol	400	12	4800	4800
3	Stationary	200	12	2400	2400
4	Rent cost	800	12	9600	9600
5	Office goods (Table, chairs, PCs, printer, projector, copier machine)			14000	0
6	A vehicle			20000	0
	Subtotal			56800	22800
C	<i>JV management activities</i>				
1	Registration and licensing drugs	1250	12	15000	15000
2	Study tour of 3 government officials (lobby)				12000
3	Marketing manager, India	2000	2	4000	4000
4	Marketing & sales incentives	2000	12	24000	24000
5	Miscellaneous			3600	3600
	Subtotal			46600	58600
	Total (FY)			203000	181000
	Total for initial 2 years				384000

1. D. Jargalsaikhan CEO, Medical doctor, has over 12 years' experience on Project funded by International organizations, was Director of Information Monitoring and Evaluation Department, MoH.

2. E. Enkhtuul has over 5 years' experience on Portfolio Project Management and Consultant for JFPR project funded by ADB, was team player among people with multicultural backgrounds and director Ach Global LLC and she had been in UK with parents, German on study. She is excellent in English.

3. Turbat

4. Umar

5. D. Otgonabyar, Lawyer